

LEPIDOPTERA

Moths

In terms of the planet's history and a 24-hour clock, modern humans appear a few seconds before midnight while moths appear around 11pm. They first appear in the fossil record 200 million years ago and just recently scientists in Germany discovered 70 tiny scales from moth wings when looking at the core samples of ancient spore samples.

Worldwide there are believed to be around 160,000 species of moths compared to 17,500 butterflies. In the UK there are about 875 regular species of macro-moth species and 1,549 micro-moth species.

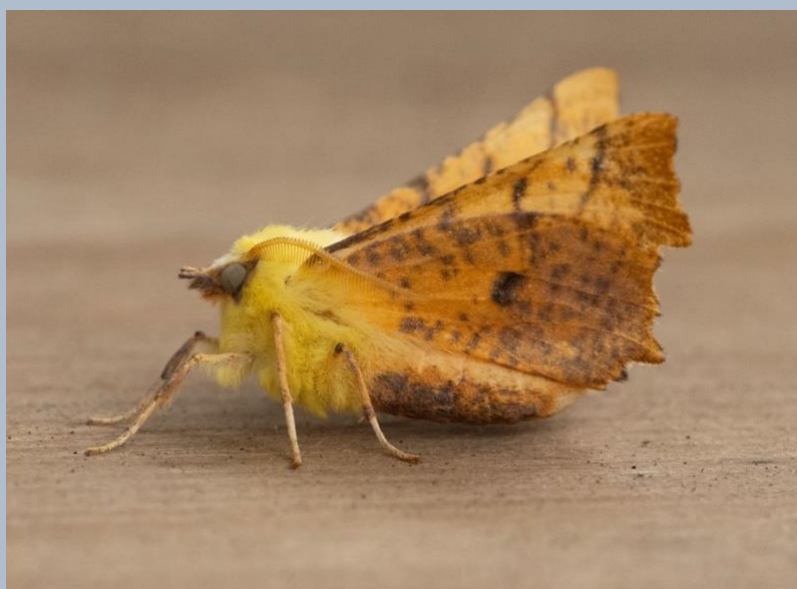
The life cycle of a moth lasts between 65-90 days with female adult moths living for about 30 days and laying in the region of 300 eggs.

In 2021 Butterfly Conservation and several other organisations produced a joint report 'The State of Britain's Larger Moths' which says there has been a 33% decline in moths over the last 50 years.

Again, habitat loss and fragmentation are said to be the main reason along with changes in farming practices and increasing urbanisation. Other reasons include changes in the way we manage our gardens, pesticides and light pollution.

In Britain around 130 of the 900 species of macro moths fly by day, the rest are nocturnal. Scientists think they use the light of the moon for orientation and are confused by electric lights to which they are drawn.

Moths are important pollinators, especially for night blooming plants. Moths and their caterpillars are also an important food source for other wildlife including birds, bats and other insects.



Canary- shouldered Thorn



Pale Prominent



Purple Thorn



Black Arches



Drinker



Rosy Footman



Peach Blossom

These are of some of the moths trapped by Martin Warren for his Marvellous Moth sessions at Sandy Hills in Corfe Castle during August 2024. Attending his informative moth trapping sessions inspired me to set-up a trap in my garden in West London.

UK Moths

Copyright 2026 Gerald 'Jed' Corbett



Common Plume



Straw Underwing



Large Yellow Underwing



Setaceous Hebrew Character



Shuttle-shaped Dart



Vine's Rustic



White Point



Square-spot Rustic

Moth trap - West London Garden - Sept/Oct '24



Clouded Silver



Angle Shades



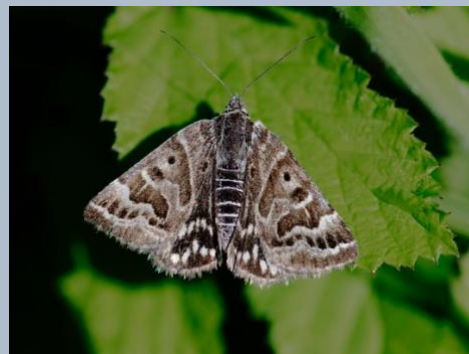
Silver-ground Carpet



Maiden's Blush



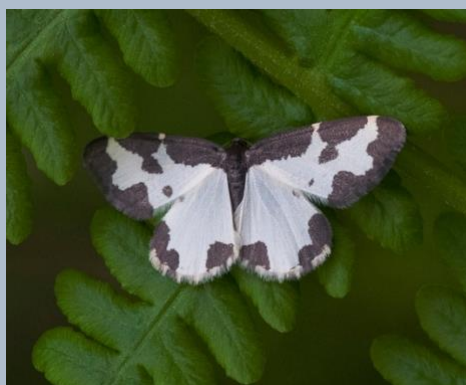
Speckled Yellow



Mother Shipton



Large Emerald



Clouded Border

Day flying moths a variety of UK locations.

UK Moths

Copyright 2026 Gerald 'Jed' Corbett



Muslin Moth



Muslin Moth



Turnip Moth



Heart and Dart



Lime Hawkmoth



White Ermine



Pale Prominent



Buff-tip

Moth trap - West London Garden - May/June '25

UK Moths

Copyright 2026 Gerald 'Jed' Corbett



Scalloped Oak



Buff Ermine



Riband Wave

Moth trap - West London Garden
12th June '25

UK Moths

Copyright 2026 Gerald 'Jed' Corbett



Poplar Hawkmoth



Swallow Prominent



Mother of Pearl

Moth trap - Martin Warren for his Marvellous Moth session at Sandy Hills in Corfe Castle on August 24th 2025

UK Moths

Copyright 2026 Gerald 'Jed' Corbett



Setaceous Hebrew Character



Brimstone moth



Common Wainscot



Heart and Dart



Large Yellow Underwing



Oak Hook-tip



Dusky Thorn



Vine's Rustic

*Moth trap - North wing, Dunshay Manor near Corfe Castle, Purbeck, Dorset
26th August '25. Thanks to Ilay Cooper.*



Peach Blossom



Orange Swift



Square-spot Rustic

*MV Light - North wing Dunshay Manor near Corfe Castle,
Purbeck, Dorset 1st September '25. Thanks to Ilay Cooper*

UK Moths

Copyright 2026 Gerald 'Jed' Corbett



L-album Wainscot



Spectacle



Hedge Rustic



Flounced Rustic



Rosy Rustic



Brimstone moth



Square-spot Rustic



Common Wainscot

*Moth trap - Worth Matravers, Purbeck, Dorset.
5th/6th September '25*



Plumed Fan-foot



Clancy's Rustic



Black Rustic

Moth trap - West London Garden - Sept 19th '25